

Scallop AP and Committee Meetings September 2012

Summary of 2012 scallop surveys

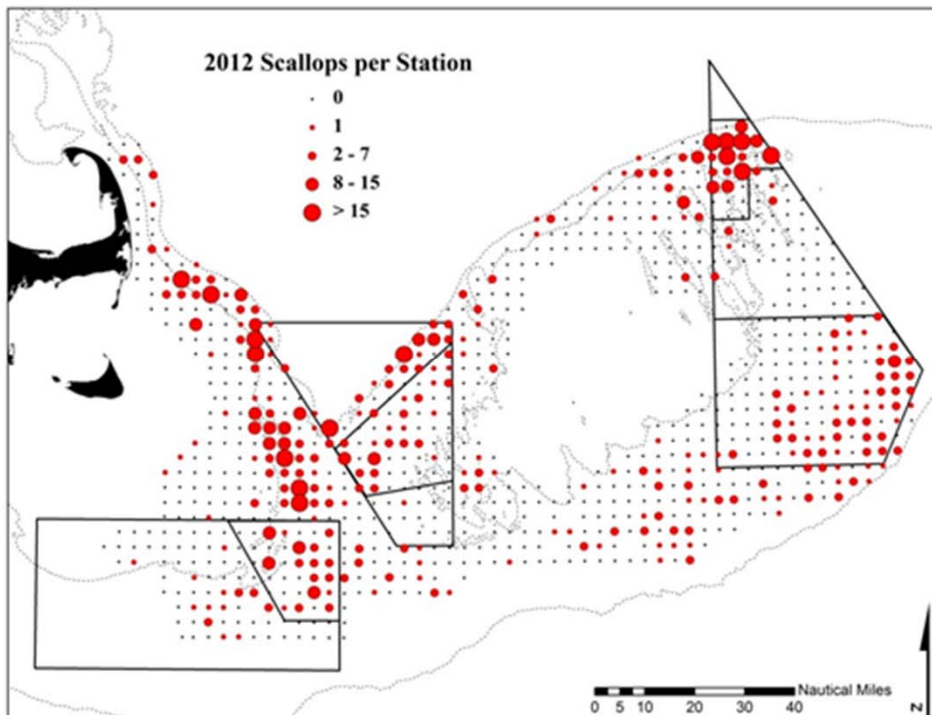
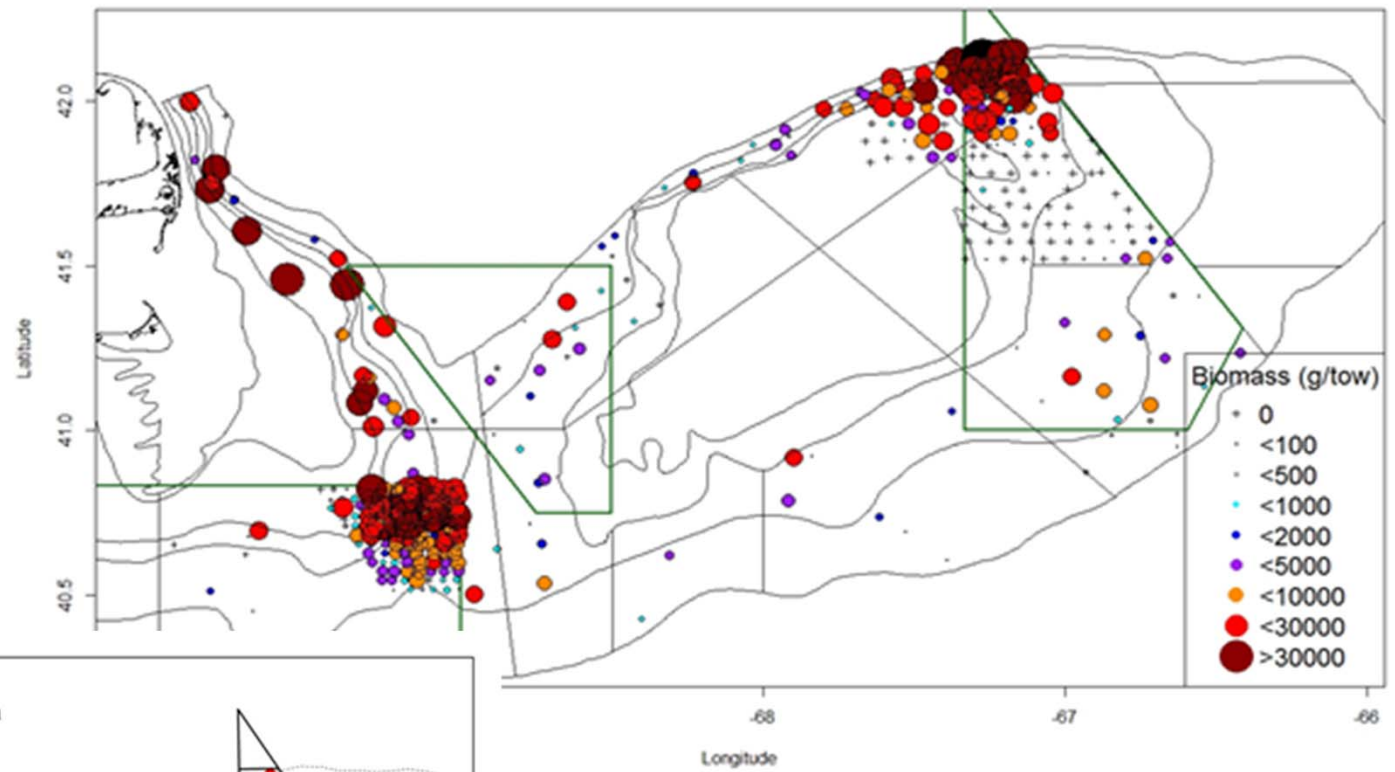
Updated scallop status

Preliminary FW24 allocations

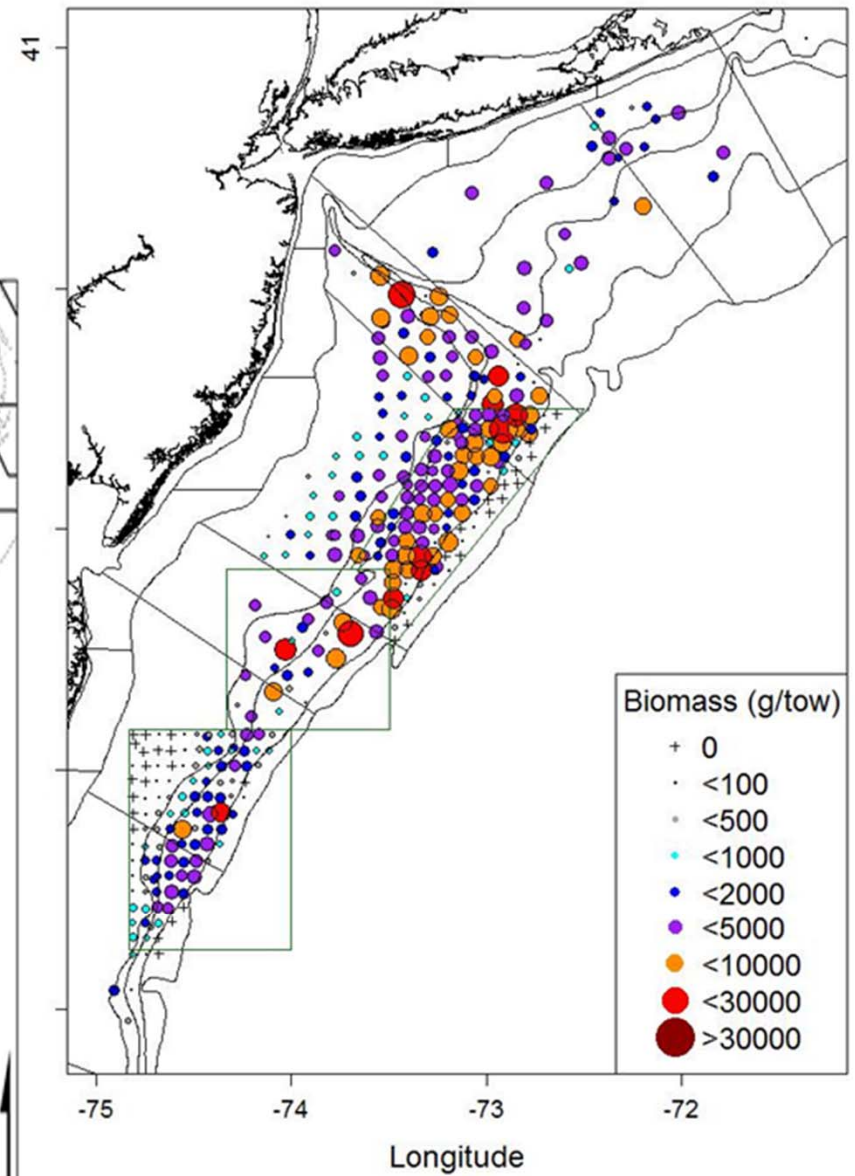
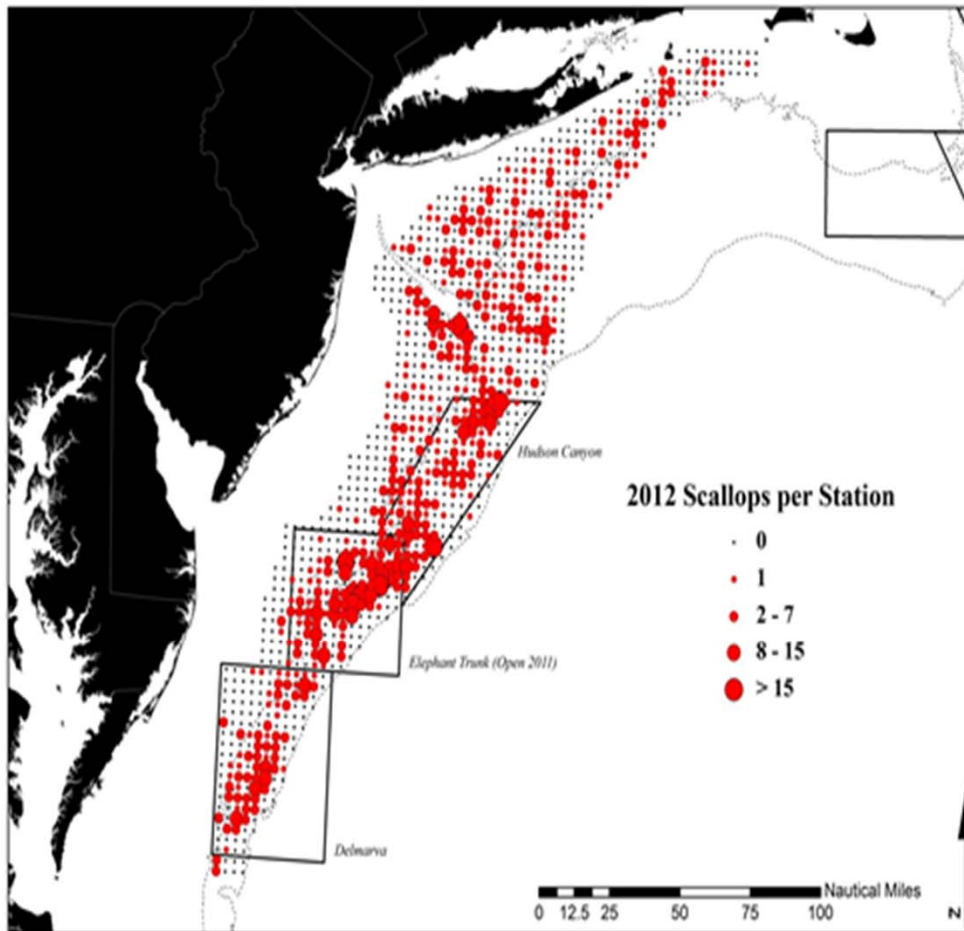
Summary of 2012 scallop surveys

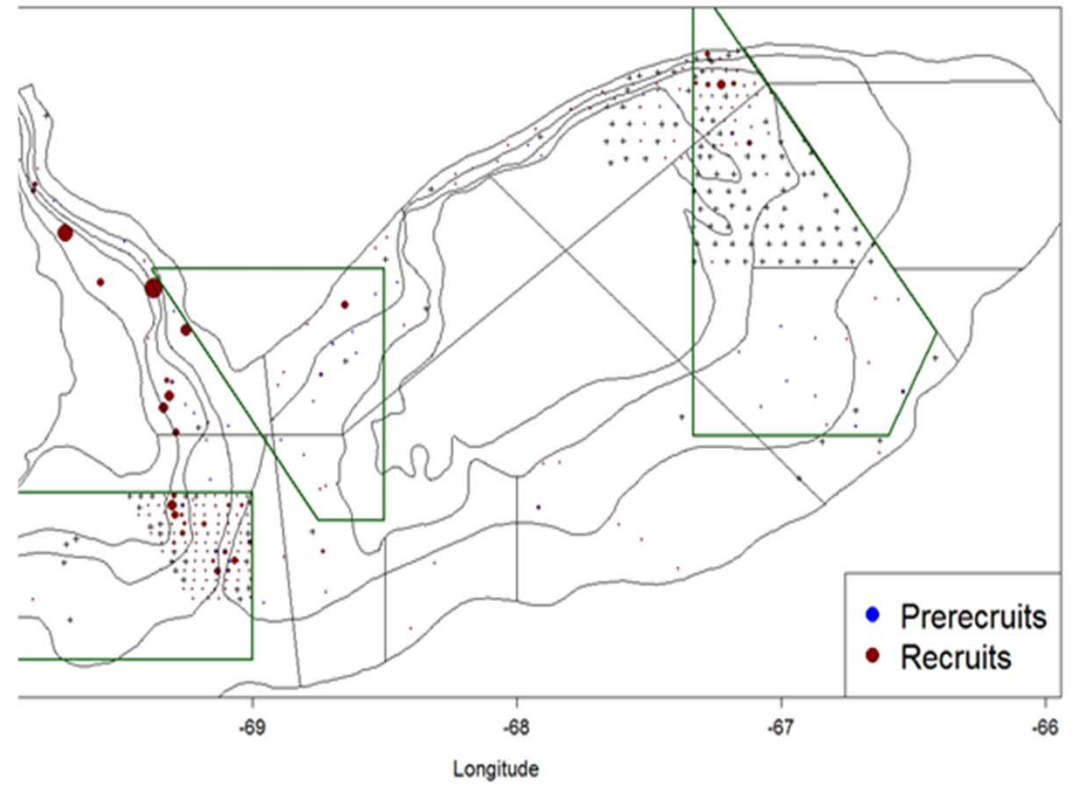
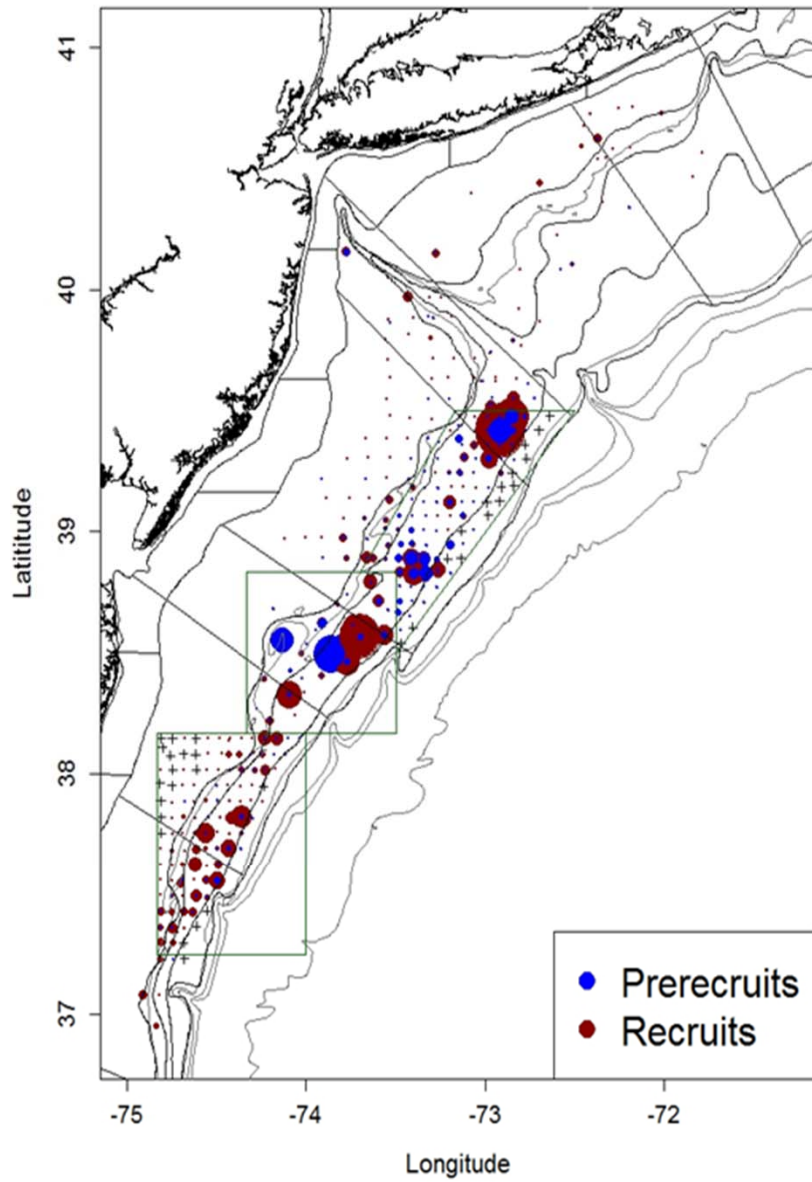
- NEFSC dredge and Seahorse (dredge and Seahorse on all 3 legs of survey)
- SMAST video (entire resource and more intensive for CA1 and ETA)
- VIMS dredge (Del, HC, NL, CA2 north and inshore NYB)
- Habcam (CA2 south)
- PDT combines the results of all surveys

Georges Bank



Mid-Atlantic





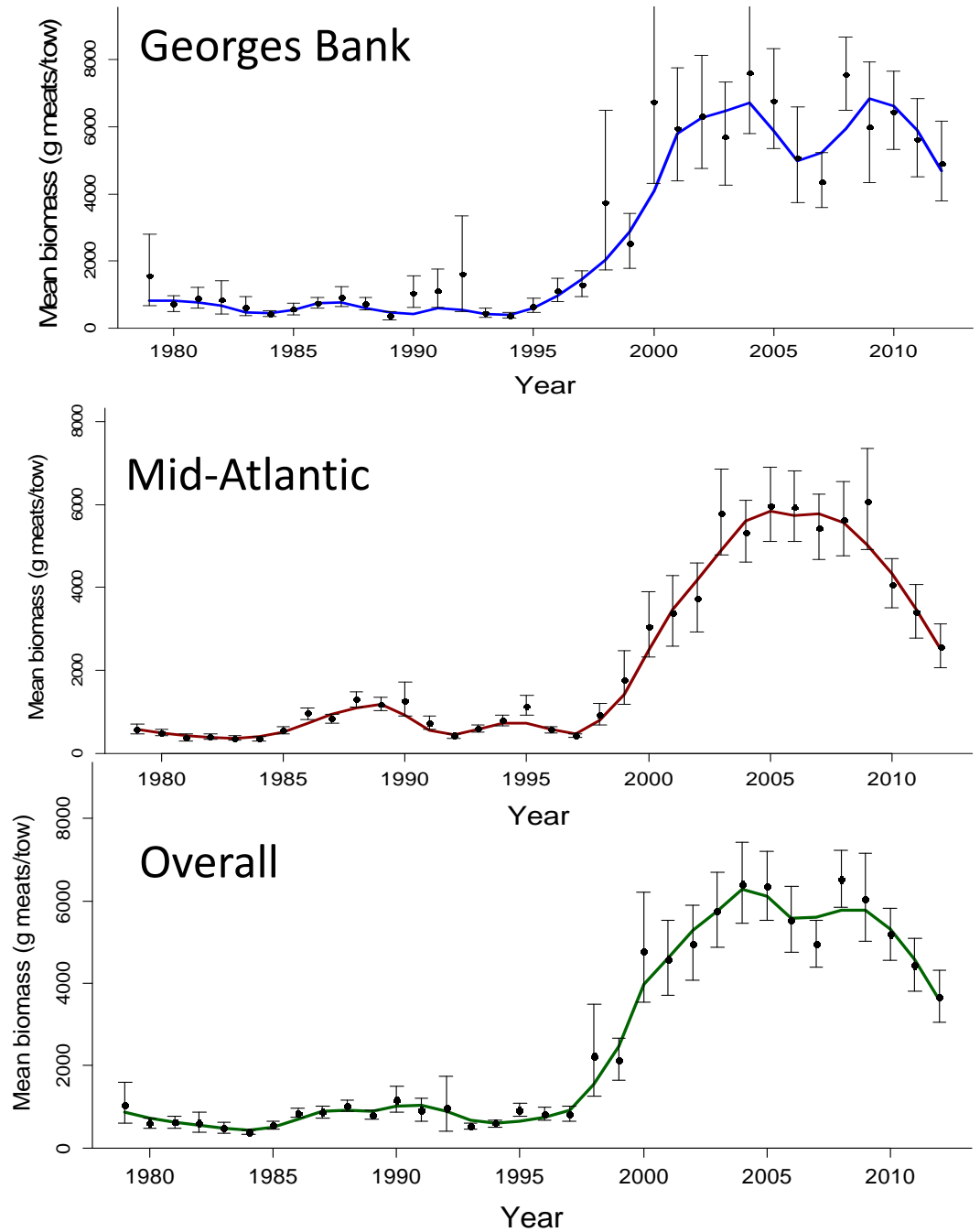
Recruitment

GB: very poor

MA: very good

Biomass survey indices have been declining over the past several years, especially in the Mid-Atlantic and in the access areas of both regions

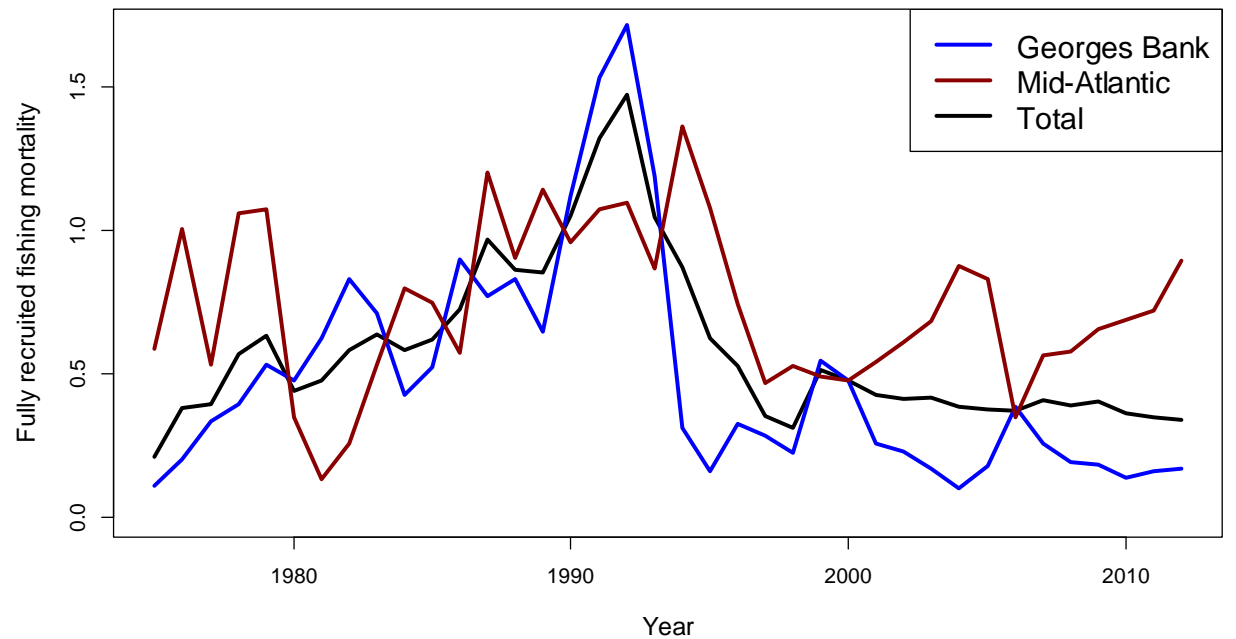
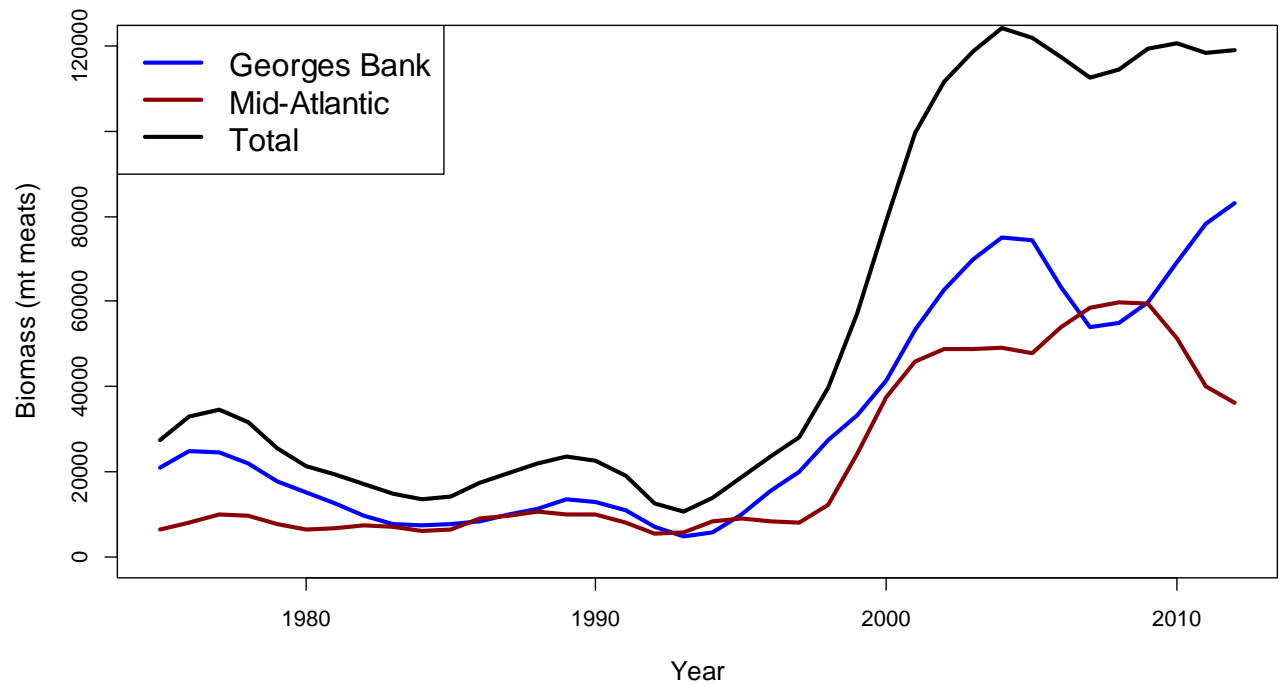
Total biomass = 107,000 mt



CASA is the scallop assessment model
 Estimates realized F and biomass
 PDT updated with 2012 dredge and video surveys
 Total landings for 2012 assumed to be the same as
 2011, except that 2000 mt more was assumed to
 be from GB and 2000 mt less from the MA
Overfishing is not occurring and not overfished

	MA 2012 Estimate	GB 2012 Estimate	Total 2012 Estimate	Stock Status Reference Points
Biomass (in 1000 mt)	36	83	119	½ Bmsy = 62,679
F	0.89	0.18	0.34	OFL = 0.38

New model estimates show declining biomass and increasing fishing mortality in the Mid-Atlantic



Projections

- SAMS model used to forecast future catch
- Updated survey and fishery data used
- Allocations set based on Hybrid OFD
- 2 principles: F in open areas cannot exceed OFL rate (0.38) and overall F cannot exceed F with 25% chance of exceeding ABC (0.28)
- This year constraining factor is open area F
- Remove catch from access areas and set OA catch at max of 0.38

Recent Performance

	OFL (including discards)	ABC (including discards)	Discards (at ABC)	ABC available to fishery (after discards removed)	Landings	Catch (landings plus assumed discards)	% of ABC caught
2011	37,148	31,279	4,009	27,270	26,513	30,522	97.6%
2012	39,449	33,234	4,266	28,968	26,513*	30,779	92.6%

* 2012 Landings is a projection since FY not over. Assumed to equal 2011 Landings (26,513 mt).

- Estimated landings at MSY (SARC 50) = 24,975 mt
- Mean landings from 2003-2011 = 26,272 mt
- Been working because of: unusually high recruitment in MA; opening of GB areas (“reserve”); and biomass above MSY so could fish above MSY
- However, recruitment has been lower past few years and biomass is below MSY (125,000 mt).

Alternative 1

		Landings			Fishing Mortality		
Area	2013	2014	2015	2013	2014	2015	
HCS	1331	0	0	0.45	0	0	
ET	0	0	3858	0	0	0.25	
DMV	0	1593	2386	0	0.25	0.3	
MAOpen	4993	5636	6477	0.28	0.28	0.3	
CL1	764	0	0	0.6	0	0	
CL2	1444	947	635	0.6	0.6	0.4	
NLS	0	1923	825	0	0.75	0.4	
GBOp	8703	7413	6583	0.49	0.51	0.51	
TotalAA	3539	4463	7704				
TotalOpen	13696	13049	13060	0.38	0.38	0.38	
EFH Areas	0	0	0	0	0	0	
Total	17235	17513	20764	0.22	0.21	0.24	

- 2013: 2 trips at reduced poss level and 33 DAS
- 2014: 2 trips at reduced poss level and 31 DAS

FY	CAI	CAII	NLS	HC	ETA	DMV	Total AA catch (mil lbs)	Total AA catch per vessel
2013	open	open		open			7.8	26,000
2014		open	open			open	9.8	30,000
2015		open	open		open	open	17.0	54,000

- Preliminary possession limits:
2013: 13,000 lbs. and 2014: 15,000 lbs.
- PDT is recommending that default 2015 allocations only include DAS and not AA trips

Allocations (lb) Proposed in Framework 24			
	2013	2014	2015
OFL	69,566,153 (31,555 mt)	77,403,506 (35,110 mt)	83,937,940 (38,074 mt)
ABC (after discards removed)	46,305,418 (21,004 mt)	52,242,406 (23,697 mt)	59,932,051 (27,185 mt)
incidental	50,000 (23 mt)	50,000 (23 mt)	50,000 (23 mt)
RSA	1,250,000 (567 mt)	1,250,000 (567 mt)	1,250,000 (567 mt)
OBS	463,054 (210 mt)	522,424 (237 mt)	599,321 (272 mt)
LA sub-ACL (94.5% of ACL after set asides and incidental removed)	42,091,860 (19,093 mt)	47,646,208 (21,612 mt)	54,840,256 (24,875 mt)
LA sub-ACT	33,782,722 (15,324 mt)	34,012,962 (15,428 mt)	40,684,519 (18,454 mt)
IFQ-only (5% of ACL)= sub-ACL = ACT	2,227,083 (1010 mt)	2,520,963 (1,143 mt)	2,901,601 (1316 mt)
IFQ + LA (0.5% of ACL)=sub-ACL=ACT	222,708 (101 mt)	252,096 (114 mt)	290,160 (131 mt)

Alternative 2

- Same as Alt 1 except each FT LA vessel only allocated 1 AA trips at 18,000 lbs. in HC or CA2
- 1.8 million less overall
- CA1 remains
- Constant possession limits

Future does look brighter

- Large year class observed in MA in 2012
- 2011 year class could be half as large as 2001
- Harvestable in 2015-2016
- Will want to protect MA access areas now